

version 1.0



# 2023-2024 BROCHURE

*Gel Documentation System*



# Imaging System SmartView Pro Imager

- Standalone gel doc system with high-quality monochrome CCD
- Exchangeable emission filters provide for instant visualization
- Intuitive 10.4" interface with color touch-screen
- Zoom-able lens for proper picture size
- Movable platform for gel excision with UV-protection shield
- Automatic UV shut off mechanism
- Optional trans white light and blue light plates



SmartView Pro 2300



System setup

Default setting



UV light protection warning

Batch file management



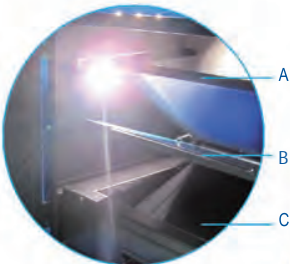
Blue light plate (UVCI-2300)

White light plate

Viewing via window

Viewing via screen

Viewing window



UVCI-2300

- Flip-style:
- A. White light plate
  - B. Blue light plate
  - C. Drawer-type UV transilluminator



Control Interface

Model	SmartView Pro 2300
Cat. No.	UVCI-2300
Camera	1/1.8" interline UXGA monochrome progressive 2.0MP CCD
Pixels Size	4.4µm x 4.4µm
Lens (Camera)	F1.2, 12.5 – 75mm (with one +1 close-up lens), 6X zoom lens, manual
Camera Video Output	12bit
Filter (Camera)	Optical EtBr Filter / Optical SYBR Green Filter / Orange Amber Filter
*Ordered Separately	
Image Storage	Built-in 14GB Memory (3000 tiff images storage) and USB flash
Cabinet	Pull out, sliding transilluminator
Field Of View (WxL)	Maximum filed od view 10.2"x8.3" (260x210mm)
Dimension (WxLxH)	Approx. 16.1"x16.7"x35.8" (410x425x910mm)
Weight	Approx. 62.8lbs. (28.5kg)
Display	10.4" color touch screen, 800x600
Viewing Window	Built-in UV viewing window
Window Filter	Amber Filter embedded in viewing window (580nm)
Light Source	Built-in drawer type UV Transilluminator 312(302)nm built-in LED white light
Optional Accessory	White Light Plate (power built-in) Blue light plate (power built-in) 470nm
Saved Image	Max. 16bit
Grayscale	12bit, 0-4095 gray levels
Safety	CE
Rated Voltage	100-240V~, 50/60Hz

\*Please visit our website at [www.majorsci.com](http://www.majorsci.com) for more product selection and detailed information.

\*MS 1D Analysis Software (MBE-IMG-SW) is included in UVCI-2300 for image analysis only.

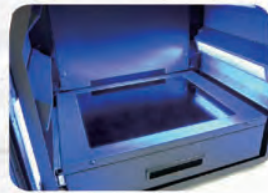
\*Filters are necessary part for Gel Documentation System.

\*All filters have to be ordered separately and discuss with local dealer before order.

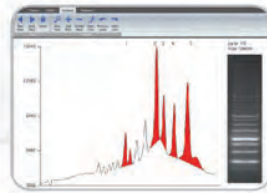
SmartView Pro Imager, CMOS



FC CE



Epi-blue light for optional light source



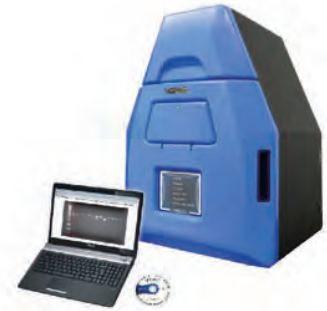
Gel image analysis software included for SmartView Pro



White light plate for protein analysis

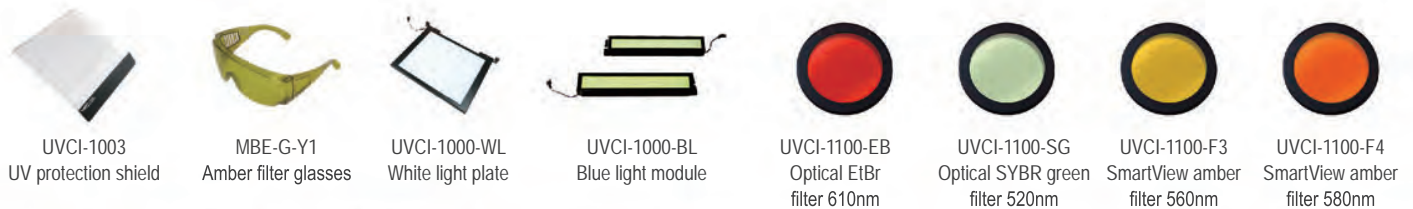


- Ergonomic design for easy viewing and operating
- Built-in mechanism for easy gel cutting
- Multi-image file saving selection: BMP, TIFF, JPEG and PNG
- Blue light technology for operation and environment safe lab experiment
- White light plate installation integration available (optional accessory)



Cat. No.	UVCI-1100 (Standard version)
Camera	1/2.5" 5.0MP pixel monochrome sensor
Camera video output / Saved image	12bit
Max. aperture	f/1.2
Built-in UV transilluminator	Yes, 312nm (optional white or blue light available)
Image storage	PC only
Safety device	Safety door switch
Features	Image capture software included
	USB connects to a PC
	Connect to PC; PC required

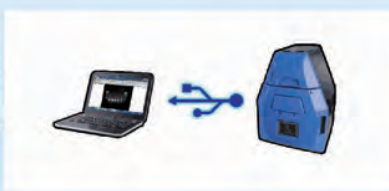
\* iPad and PC not included.  
 \* MS 1D Analysis Software (MBE-IMG-SW) is included in UVCI-1100 for image capture and analysis.  
 \* Filters are necessary part for Gel Documentation System.  
 \* All filters have to be ordered separately and discuss with local dealer before order.



Easy gel cutting design with UV light



Pull out UV transilluminator



USB connection

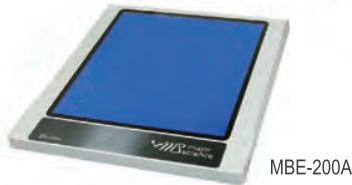


Viewing window

Digimage System, DI-01

- Effective Pixels Approx. 24.2 megapixels (Total Pixels Approx. 25.8 megapixels)
- High resolution 8" TFT screen
- Digital control panel
- Compact chamber and lightweight
- Can be operated PC free
- Inner white light LED at two sides
- Safety door switch
- Optional gel analysis software package available
- Universal rated voltage: 100-240V~

\*Could be bundled with MBE-200A.



CE

SmartView Simple Imager System MUV-IMG series



\*PC / Tablet is not included.

CE

White light plate  
DI-WLA3 (297x400mm)  
DI-WLA4 (210x297mm)  
DI-WLA6 (105x150mm)



Cat. No.	MUV-IMG-CA	DI-01	DI-HD
Camera / Lens	24.2MP digital camera, Wi-Fi function		N/A
Display / Control panel	Digital camera		
Max. aperture	f/3.5-6.3 (IS STM Lens)		N/A

\*All images are for reference only, actual products might differ from the pictures above.  
\*Filters are necessary part for Gel Documentation System.  
\*All filters have to be ordered separately and discuss with local dealer before order.

Transilluminator

SmartView Transilluminator / UV Transilluminator

- 312nm UV for gel observation; 254nm UV for irradiate samples; 365nm UV for gel cutting/imaging and avoid photonicking
- \*High performance UV light model also available.

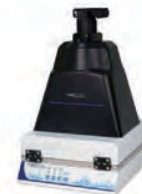


SmartView Transilluminator MUVB-100 series



FC CE

UV Transilluminator MUV series



Cat. No.	MUVB-111	MUVB-121	MUVB-122	MUV26	MUV21
Wavelength	single 312nm	dual 254 / 312nm	dual 254 / 365nm	254 / 312 (302) / 365nm	
Filter size (mm) (WxL)	210x210			260x210	210x210
Light source	8W x 5 tubes, with built-in UV light and 470nm Epi blue light	8W x 9 tubes, with built-in UV light and 470nm Epi blue light		8W x 6 tubes	
Intensity switch	High (100%) / Low (70%) intensity switch for single wavelength mode				

\*Please visit our website at [www.majorsci.com](http://www.majorsci.com) for more product selection and detailed information.



[www.majorsci.com](http://www.majorsci.com)

[info@majorsci.com](mailto:info@majorsci.com)



#### Taiwan Headquarters

##### Headquarters:

No. 156, Sec. 1, Guoji Rd., Taoyuan Dist.,  
Taoyuan City 33061, Taiwan  
T/+886-3-3762878  
F/+886-3-3761310

##### Factory:

No.19, Ln. 207, Huakang St. Bade Dist.,  
Taoyuan City 33464 Taiwan  
T/ +886-3-3623319  
F/ +886-3-3623133  
Email : [info@majorsci.com](mailto:info@majorsci.com)

#### Shanghai Office

Room 612, International business exhibition center,  
9300 Hunan Road, Pudong, Shanghai, China  
National toll-free No.:400-823-9177  
T/ +86-21-50795277  
F/ +86-21-50795277

#### US Office

19959 Sea Gull Way  
Saratoga, CA 95070  
U.S.A.  
T/ +1-408-366-9866  
F/ +1-408-446-1107

#### India Office

D. No. 12-13-99, Satguru Apts. Extn.  
Street. No. 3, Lane No.1, Tarnaka  
Secunderabad – 500 017. India  
T/ +91-40-27001515  
T/ +91-40-27001586

