

version 1.0



# 2023-2024 BROCHURE

## *Dry Bath Incubator*



# ry Bath Incu ator



## Mini Cooler, MC-020

- Molded aluminum alloy chamber with PTFE coating resists stains and water marks
- PID temp. control helps maintain temperature accuracy: no more temperature overshooting
- Safety device: over-heating protection & SSR failure detection (selected model only)
- Outstanding heating rate
- Temperature uniformity at ±0.2°C
- User temperature calibration available for all units



MD-MINI-LID

MD-MINI-CAR-ADAPTER

## Mini Dry Bath, MD-MINI I

Cat. No.	MD-MINI
Display	LED
Temperature control range	5°C above ambient to 100°C
Temperature increment	0.1°C
Temperature accuracy	0.25°C at 37°C
Timer	9999 (min) / Continuous
Dimension (mm)(WxLxH)	153x125x97 (Lid included)



MC-01N



Cat. No.	MC-0203
Display	LCD
Power	max. 60W
Dimension (mm)(WxLxH)	135x152x185 (excluding lid)
Controller	High performance 32 bits microprocessor
Heating /Cooling chamber	Molded waterproof aluminum alloy coated with PTFE
Temperature control range	30°C below ambient temperature (minimum -10°C) to 100°C
Temperature increment	0.1°C
Temperature calibration	Yes
Heating rate	Max. 5°C per min
Cooling rate	Max. 4°C per min
Programmable	Yes ( Quick start, Constant, Programmable, Annealing program)
Timer	9999 (min)
Safety	Leak proof heating chamber
Block type	Standard and customized type are available
PC Connection	USB

## Ultimate Dry Bath Incubator, MC-01

Cat. No.	MC-01N
Chamber dimension (mm) (WxLxH)	130x90x50
Display	2.6" LCD
Dimension (mm)(WxLxH)	200x295x140
Temperature control range	30°C below ambient temperature ( minimum -10°C ) to 100°C
Temperature increment	0.1°C
Temperature accuracy at 37°C	0.2°C
Operation mode	Constant operation: constant temperature (-10°C to 100°C); Timer: 9999 (min)
	Program operation: 1-4 steps and up to 9 cycles; Timer: 9999 (min)
	Annealing program

## Elite Dry Bath Incubator, E series



EL-02

EL-01

- External temp probe available for function control.
- data logging software (MD-01N/02N only, optional with RS232)

Cat. No.	EL-01	EL-02	MD-01N	MD-02N
Display	LCD		LED	
Temperature control range	5°C above ambient to 150°C			
Temperature increment	0.1°C			
Temperature accuracy at 37°C	0.2°C			
Timer	99 (hr): 59 (min) / Continuous		999 (min) / Continuous	
Dimension (mm)(WxLxH)	152x150x135	152x230x135	200x298x88	

\*\*For prevent temperature difference effect and keep temperature stable, P is required in high temperature control mode ( > 140 °C ) or contact the local dealer before ordering.

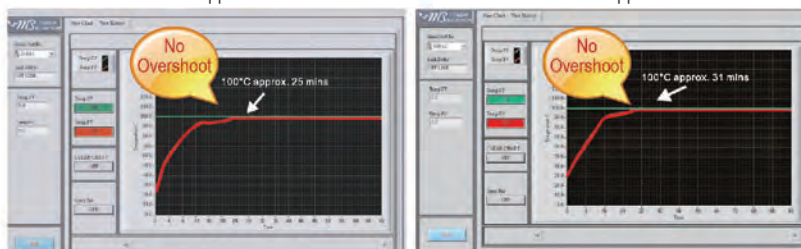
## Genius Dry Bath Incubator, MD series



MD-01N

MD-02N

MD-01N / EL-01	MD-02N / EL-02
Temp. set value: 100°C	Temp. set value: 100°C
Initial temp. value: 25°C	Initial temp. value: 30°C
Block model: MD-B1.5	Block model: MD-B1.5
Process time: Approx. 25mins	Process time: Approx. 31mins



\*Please visit our website at [www.majorsci.com](http://www.majorsci.com) for more product selection and detailed information.



Major Science thermostirrer series are equipped with built-in stirrers on the bottom of each well combined with excellent temperature control. Pre-configured long-durability motor for chemical compound synthesis, combinatorial chemistry, sample concentration, denaturation, derivatization, enzyme analysis and process optimization.

TS- W



- Microprocessor control with digital performance
- Brushless motor for individual well agitation
- Outstanding temp. control performance up to 200°C
- Well-insulation around casework
- Over temp. protection
- LCD screen & timer (standalone model only)



Cooling System Connection Port



TS-8W



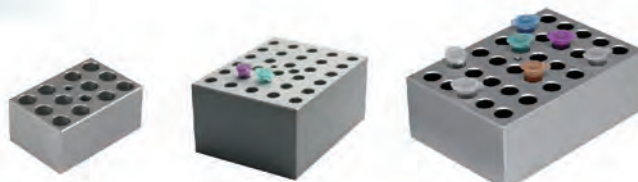
Cat. No.	TS-8W-110	TS-8W-220
Controller	Digital microprocessor controller	
Display	2.6" LCD monochrome display	
Motor	Brushless motor	
Number of position	8 wells (2x4) with individual magnetic stirrer **	
Well diameter	Ø29.5mm, 62mm depth **	
Stirring speed	500 - 3500rpm	
Temperature control range	5°C above ambient to 200°C	
Temperature increment	± 0.1°C	
Temperature uniformity	± 0.7°C @ 150°C	
Temperature accuracy	± 0.2°C @ 150°C	
Temperature calibration	Yes	
Operating temperature	Ambient to 40°C	
Timer	99 (hr): 59 (min) / Continuous	
Block material	PTFE coating with individual magnetic	
Data logging	RS 232 (Max. 2.5meter long)	
Safety	Insulated wells around casework	
	Leakage proof for heating chamber	
	Over temperature protection	
Rated voltage	110V~; 50/60Hz, 6.3A	220V~; 50/60Hz, 3.15A
Dimension (mm)(WxLxH)	230x300x160	
Weight	Approx. 8.5kg	
Power	600W	
Vessel diameter	Max. 28.5mm **	
Communication port	RS-232	

\* Temperature uniformity would be dependent on the integration to your automation system.  
 \*\* Customized Specification.

\*Please visit our website at [www.majorsci.com](http://www.majorsci.com) for more product selection and detailed information.

# Dry Bath Bloc / Beads

The precisely machined aluminum alloy blocks deliver efficient heat transfer and are suitable for microplate and various test tubes ranging from 0.2ml to 50ml centrifuge tubes.



Mini Dry Bath Block, MD-MINI series

Dry Bath Block, MD series

Ultimate Dry Bath Block, MC series

## Dry Bath Block Specifications

\*Customized blocks available.

Cat. No.	Mini Dry Bath Blocks	Dry Bath Blocks	Ultimate Dry Bath Blocks
Block material	Aluminum alloy		
Dimension (mm)( WxLxH)	47x71x32 (MD-MINI-B01/02/05/06/07) 47x71x75(MD-MINI-B03/04)	87x128x62.3(MD-MP01-S) 104x158x50 (MD-MP01-D/ MD-MP02-D) 87x128x69.5(MD-MP02-S) 79x104x50(standard blocks)	89x129x46(standard blocks) 64.5x89x46 (MC-B0.2H/0.5H/1.5H) 89x129x30 (MC-BS0.2+0.5/0.5+1.5)

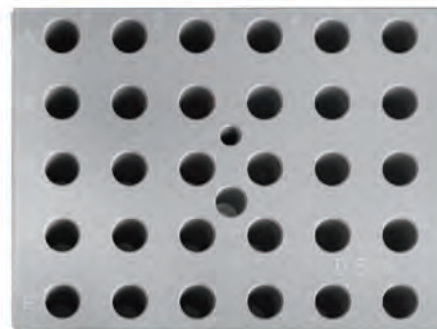
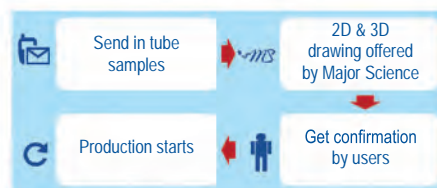
## Metallic Thermal Beads Specifications

Cat. No.	Metallic Thermal Beads
Properties	Metal composition
	Moisture and gas impermeable
	High thermal conductivity
	Smooth, rounded surface
Working temperature range	-80°C to 180°C
Size	Diameter 5-8mm, Height 1-2mm

Metallic thermal beads as an alternative to the dry bath aluminum blocks. The beads are dry metallic thermal alloy designed to replace water in a water bath and ice in an ice bucket.

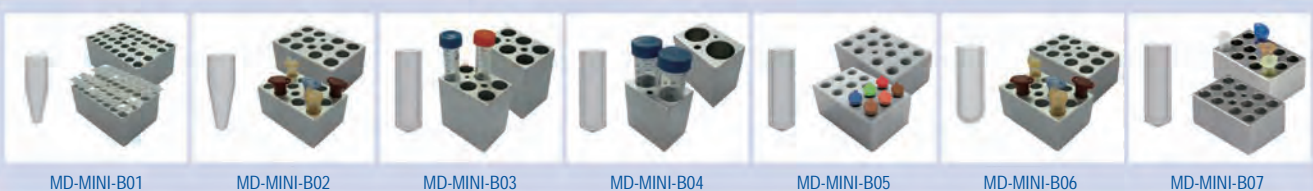


## Production Process



Laser marked on the selected blocks

### Mini Dry Bath Blocks



MD-MINI-B01	For 0.2ml tube (PCR strip tube), 32 wells, 6.35mm, depth 17mm, (WxLxH) 47x71x32mm
MD-MINI-B02	For 1.5ml tube, 12 wells, 10.88mm, depth 30mm, (WxLxH) 47x71x32mm
MD-MINI-B03	For 15ml tube, 6 wells, 17.3mm, depth 70mm, (WxLxH) 47x71x75mm
MD-MINI-B04	For 50ml tube, 2 wells, 29.0mm, depth 70mm, (WxLxH) 47x71x75mm
MD-MINI-B05	For 0.5ml tube, 12 wells, 7.9mm, depth 25mm, (WxLxH) 47x71x32mm
MD-MINI-B06	For 2.0ml or 1.5ml tube, 12 wells, 11.0mm, depth 30mm, (WxLxH) 47x71x32mm
MD-MINI-B07	For 2.0ml or 1.5ml tube, 12 wells, 11.0mm, depth 30mm, (WxLxH) 47x71x32mm
MS-BL95-E	Block Lifter, 95mm length with E-type retaining rings

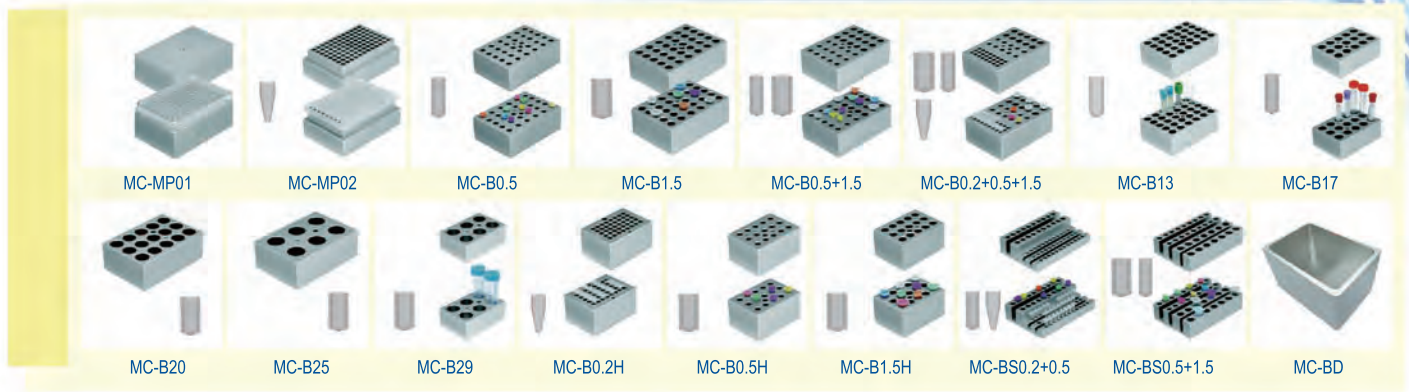


### Dry Bath Blocks



MD-MP01-S	For microplate; titerplate (Plain Block for Single Block unit only)	MD-B0.5/1.5	One side for 1.5 or 2.0ml tube, 20 wells and another side for 0.5ml tube, 30 wells (on the opposite side)
MD-MP01-D	For microplate; titerplate (Dual Block unit only)	MD-B13	Well size 13mm, 20 wells
MD-MP02-S	For 96 wells deep microplate or PCR plate ( for Single Block unit only)	MD-B17	For 15ml centrifuge tube, 12 wells
MD-MP02-D	For 96 wells deep microplate or PCR plate ( for Dual Block unit only)	MD-B20	Well size 20mm, 12 wells
MD-B0.2	For 0.2ml tube, 64 wells (or 0.2ml PCR strip tube for 8 wells x 8)	MD-B25	Well size 25mm, 6 wells
MD-B0.5	For 0.5ml tube, 20 wells	MD-B29	For 50ml centrifuge tube, 4 wells
MD-B1.5	For 1.5ml or 2.0ml tube, 20 wells	MD-BD01	Single bead MD dry bath block, (WxLxH) 79 x104x76mm
MD-B1.5V	For 1.5ml or 2.0ml V-shaped tube, 20 wells	MD-BD02	Dual bead MD dry bath block, (WxLxH) 104 x158x76mm
MD-B0.5+1.5	Combination: for 0.5ml tube, 12 wells; and for 1.5ml tube, 12 wells (on the same side)	MS-BL95-E	Block Lifter, 95mm length with E-type retaining rings
		MD-MINI-BD000	Metallic thermal beads for Mini dry bath incubator, for MD-MINI & MC-0203, 170g (Beads only)

\*Please visit our website at [www.majorsci.com](http://www.majorsci.com) for more product selection and detailed information.



MC-MP01	For Microplate; titerplate (Plain Block)
MC-MP02	For 96 wells deep microplate or PCR plate
MC-B0.5	For 0.5ml, 30 wells
MC-B1.5	For 1.5 or 2.0ml, 30 wells
MC-B0.5+1.5	Combination: for 1.5ml or 2.0ml tube, 15 wells and 0.5ml tube, 15 wells (on the same side)
MC-B0.2+0.5+1.5	Combination: 0.2ml tube (or strip tube for 8 wells ), 24 wells; 1.5ml or 2.0ml tube, 10 wells and 0.5ml tube, 10 wells (on the same side)
MC-B13	Well size 13mm, 30 wells
MC-B17	For 15ml centrifuge tube, 15 wells
MC-B20	Well size 20mm, 15 wells
MC-B25	Well size 25mm, 6 wells

MC-B29	For 50ml centrifuge tube, 6 wells
MC-B0.2H	(1/2) half block for 0.2ml tube, 40 wells (or 0.2ml PCR strip tube for 8 wells x 5) One Ultimate Dry Bath Incubator can insert 2ea of half block
MC-B0.5H	(1/2) half block for 0.5ml tube, 15 wells One Ultimate Dry Bath Incubator can insert 2ea of half block
MC-B1.5H	(1/2) half block for 1.5 or 2ml tube, 15 wells One Ultimate Dry Bath Incubator can insert 2ea of half block
MC-BS0.2+0.5	Combination: 0.2ml tube, 36 wells; 0.5ml, 20 wells
MC-BS0.5+1.5	Combination: 0.5ml tube, 18 wells; 1.5ml, 14 wells
MC-BD	Ultimate bead bath block, (WxLxH) 90 x127x76mm
MS-BL95-E	Block Lifter, 95mm length with E-type retaining rings

## Stirring Water Bath

### SWB series

Cat. No.	SWB-10L-1	SWB-10L-2	SWB-20L-1	SWB-20L-3
Number of stirring mechanisms	1	2	1	3
Stirring speed	400-1500rpm (measured by percentage)			
Bath capacity	Approx. 10L		Approx. 20L	
Water circulation function	Yes			
Display	LCD			
Heating power	600W		800W	
Controller	Digital microprocessor controller			
Bath temperature	5 °C above ambient to 99 °C			
Temperature increment	0.1°C			
Temperature accuracy	± 0.2 °C at 37 °C			
Timer	99 (hr): 59 (min) / Continuous			
Safety device	Warning indication on screen with alarm and automatic shut down			
Bath Inner dimension (mm)(WxLxH)	240x300x150		300x500x150	
Dimension (mm)(WxLxH)	255x355x240 (without lid)		330x540x240 (without lid)	

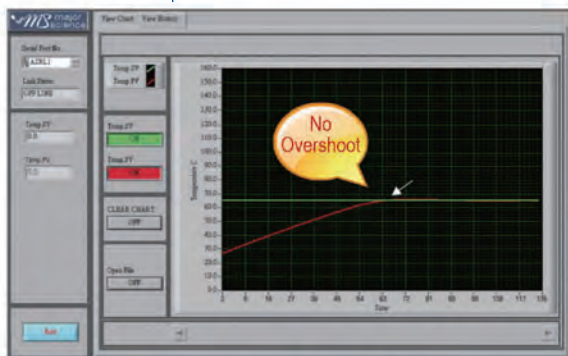
As little as 34/60 mins required to reach 65°C in 10L/20L bathes.



SWB-20L

SWB-10L

\*Using as a water bath and the picture is only for reference.



#### SWB-20L Series

Temp. set value:65°C  
Initial temp. value:27°C  
Water volume : 12 liters  
Process time: Approx. 60mins

#### SWB-10L Series

Temp. set value:65°C  
Initial temp. value:17°C  
Water volume : 5 liters  
Process time: Approx. 34mins

- Built-in magnetic stirring mechanism ensures outstanding temperature uniformity
- Polycarbonate lid for better observation
- User temperature calibration
- Data logging software available upon ordering

Max. capacity:  
15 sets of 250ml flasks  
8 sets of 500ml flasks



Illustrates max. chamber capacity only.

Max. capacity:  
6 sets of 250ml flasks  
4 sets of 500ml flasks



Built-in magnetic stirring mechanism ensures outstanding temperature uniformity

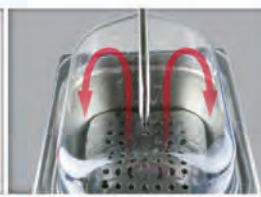


Water circulation function

- Magnetic agitator
- Stir bar



Side opening of the lid to allow minimum evaporation while maintaining water bath temperature.



Concave lid design allows condensation flow back to the tank.



[www.majorsci.com](http://www.majorsci.com)

[info@majorsci.com](mailto:info@majorsci.com)



#### Taiwan Headquarters

##### Headquarters:

No. 156, Sec. 1, Guoji Rd., Taoyuan Dist.,  
Taoyuan City 33061, Taiwan  
T/+886-3-3762878  
F/+886-3-3761310

##### Factory:

No.19, Ln. 207, Huakang St. Bade Dist.,  
Taoyuan City 33464 Taiwan  
T/ +886-3-3623319  
F/ +886-3-3623133  
Email : [info@majorsci.com](mailto:info@majorsci.com)

#### Shanghai Office

Room 612, International business exhibition center,  
9300 Hunan Road, Pudong, Shanghai, China  
National toll-free No.:400-823-9177  
T/ +86-21-50795277  
F/ +86-21-50795277

#### US Office

19959 Sea Gull Way  
Saratoga, CA 95070  
U.S.A.  
T/ +1-408-366-9866  
F/ +1-408-446-1107

#### India Office

D. No. 12-13-99, Satguru Apts. Extn.  
Street. No. 3, Lane No.1, Tarnaka  
Secunderabad – 500 017. India  
T/ +91-40-27001515  
T/ +91-40-27001586

