

# 2023-2024 Catalogue

## Dry Bath Incubator



# Mini Heating Dry Bath Incubator

## MD-MINI

The Mini Heating Dry Bath Incubator incorporates innovative ideas of compactness, performance and versatility. This palm-sized yet powerful device is designed to maximize benchtop space and enhance research productivity with ultra-precise temperature control. The interchangeable ability of heating blocks in various size permits accommodation of versatile tube sizes. Moreover, turn it into a water bath or bead bath with optional metallic thermal beads.



MD-MINI



Clear block cover ensures temperature uniformity



MD-MINI-LID



MD-MINI-CAR-ADAPTER



### Features

- Small size, fits in your palm
- User temperature calibration
- Single molded chamber, no cracks or welds
- PTFE coated chamber resists stains
- Can be used as a mini water bath or bead bath
- Outstanding heating rate
- Different sizes of heating block available for selection
- Clear cover to ensure temperature uniformity
- Optional in-car power adaptor provides portability on the road

### Specification

Cat. No.	MD-MINI
Display	LED
Power	50W
Dimension (WxLxH)	Approx. 6"x4.9"x3.8" (153x125x97mm)(Lid included)
Controller	Digital microprocess controller
Heating Chamber	Molded waterproof aluminum alloy coated with PTFE
Temperature Control Range	5°C above ambient to 100°C
Temperature Increment	0.1°C
Temperature Uniformity	± 0.20°C at 37°C
Temperature Accuracy	± 0.25°C at 37°C
Temperature Calibration	Yes
Timer	9999 (min) / Continuous
Safety	Leak proof heating chamber
	Over temperature protection
Operating Temperature	Ambient to 40°C
Special Feature	Used as water bath or bead bath
Block Material	Aluminum alloy
Block Type	Standard and customized type are available
Rated Voltage	100V-240V~
Weight	Approx. 1.3lb (0.6kg)
<b>Blocks</b>	
Block Material	Aluminum alloy
Dimension (WxLxH)	Approx. 1.9"x2.8"x1.3" (47x71x32mm) / Approx. 1.9"x2.8"x3" (47x71x75mm)
Block Lifter Well	Yes
Thermometer Well	Yes

### Ordering Information

Cat. No.	Product Description
MD-MINI	Mini Heating Dry Bath Incubator; without block

### Accessories

Cat. No.	Product Description
MD-MINI-B01	For 0.2ml tube (PCR strip tube), 32 wells, φ6.35mm, depth 19mm, (WxLxH) 47x71x32mm
MD-MINI-B02	For 1.5ml tube, 12 wells, φ10.8mm, depth 28.5mm, (WxLxH) 47x71x32mm
MD-MINI-B03	For 15ml tube, 6 wells, φ17.3mm, depth 70mm, (WxLxH) 47x71x75mm
MD-MINI-B04	For 50ml tube, 2 wells, φ29.2mm, depth 72mm, (WxLxH) 47x71x75mm
MD-MINI-B05	For 0.5ml tube, 12 wells, φ8.0mm, depth 25mm, (WxLxH) 47x71x32mm
MD-MINI-B06	For 2.0ml or 1.5ml tube, 12 wells, φ11.0mm, depth 30mm, (WxLxH) 47x71x32mm
MD-MINI-B07	For 1.5ml tube, 12 wells, φ10.9mm, depth 30mm, (WxLxH) 47x71x32mm
MS-BL95-E	Block Lifter, 95mm length, with E-type retaining rings
MD-MINI-LID	MD-MINI lid, (WxLxH) 83x58.5x31.5mm
MD-MINI-CAR-ADAPTER	Car adapter for MD-MINI and MC-0203, 1.5M

\* For a complete list of accessories, please refer to Page 71-74

\* All images are for reference only, actual products might differ from the pictures above.  
\* Technical specifications subject to change without notice.



# Mini Cooling Dry Bath Incubator

MC-0203

The product line Mini Cooling Dry Bath Incubator is the mini-series of our ultimate dry bath. It is designed to meet the requirement of accurate temperature control, ease of data transferring and programming, small foot print and ease of use. Experience the exceptional heating/cooling rate with quick start feature and the portability to work your sample on the road! Perfect instrument can be used in QC process such as in food industry.



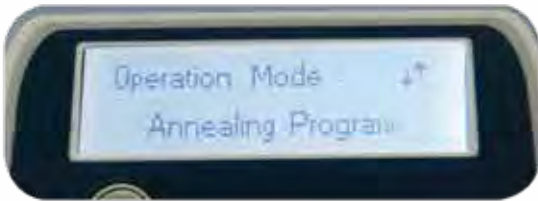
MC-0203



Can be used as a bead bath

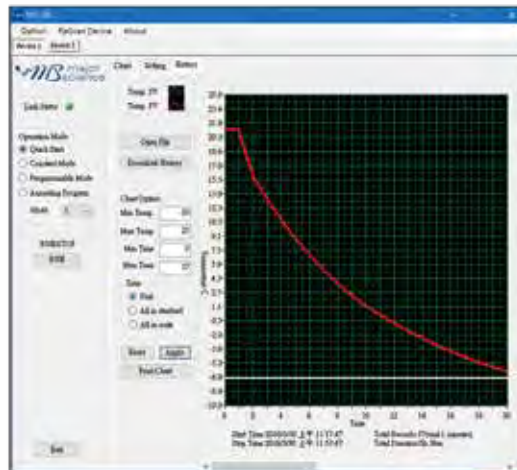


Quick start program



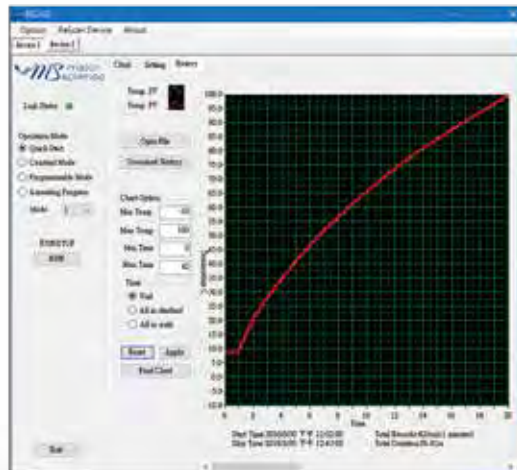
Annealing program

## Functional control software



- Temp. set value: -6°C
- Initial temp. value: 20.6°C
- Block type: MD-MINI-B02
- Process time: Approx. 20mins

## Functional control software for cooling and heating models



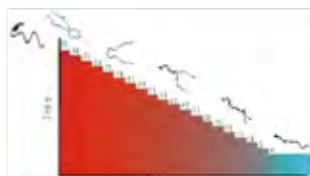
- Temp. set value: 100°C
- Initial temp. value: 9°C
- Block type: MD-MINI-B02
- Process time: Approx. 20mins

### Features

- Small size, fits in your palm
- User temperature calibration
- Single molded chamber, no cracks or welds
- PTFE coated chamber resists stains
- Can be used as a mini water bath or bead bath
- Outstanding heating and cooling rate
- Different sizes of aluminum alloy block available for selection
- Clear cover to ensure temperature uniformity
- Quick start / Constant mode / programmable mode / Annealing program operation mode
- Optional in car power adaptor provides portability on the road

## Specification

Cat. No.	MC-0203
Display	LCD
Power	max. 60W
Dimension (WxLxH)	Approx. 5.3"x6"x7.3" (135x152x185mm) (excluding lid)
Controller	High performance 32 bits microprocessor
Heating /Cooling Chamber	Molded waterproof aluminum alloy coated with PTFE
Temperature Control Range	30°C below ambient temperature (minimum -10°C) to 100°C
Temperature Increment	0.1°C
Temperature Uniformity	± 0.2°C at 37°C
Temperature Accuracy	± 0.25°C at 37°C
Temperature Calibration	Yes
Heating Rate	Max. 5°C per min
Cooling Rate	Max. 4°C per min
Timer	9999 (min)
Cooling/ Heating Parts	Peltier / Heating element
Operation Mode	Constant operation: constant temperature (-10°C to 100°C)
	Program operation: 1-4 steps and up to 9 cycles
	Annealing program
	Quick start program: 4°C, 16°C, 37°C, 56°C, 95°C pre-set
Safety	Leak proof heating chamber
Operating Temperature	Ambient to 40°C
Special Feature	Can be used as water bath or bead bath incubator
Block Material	Aluminum alloy
Block Type	Standard and customized type are available
PC Connection	USB
Weight	Approx. 2.9lb (1.3kg)



Annealing Program

Initial Temp.	95.0
Descending Temp.	5.0
Holding Time.	5
Final Temp.	4.0



As a water bath

## Ordering Information

Cat. No.	Product Description
MC-0203	Mini Cooling Dry Bath Incubator, programmable cooling and heating; without block

## Accessories

Cat. No.	Product Description
MC-0200-SW	Functional control software for Mini Cooling Incubator including a USB cable
MD-MINI-B01	For 0.2ml tube (PCR strip tube), 32 wells, φ6.35mm, depth 19mm, (WxLxH) 47x71x32mm
MD-MINI-B02	For 1.5ml tube, 12 wells, φ10.8mm, depth 28.5mm, (WxLxH) 47x71x32mm
MD-MINI-B03	For 15ml tube, 6 wells, φ17.3mm, depth 70mm, (WxLxH) 47x71x75mm
MD-MINI-B04	For 50ml tube, 2 wells, φ29.2mm, depth 72mm, (WxLxH) 47x71x75mm
MD-MINI-B05	For 0.5ml tube, 12 wells, φ8.0mm, depth 25mm, (WxLxH) 47x71x32mm
MD-MINI-B06	For 2.0ml or 1.5ml tube, 12 wells, φ11.0mm, depth 30mm, (WxLxH) 47x71x32mm
MD-MINI-B07	For 1.5ml tube, 12 wells, φ10.9mm, depth 30mm, (WxLxH) 47x71x32mm
MS-BL95-E	Block Lifter, 95mm length, with E-type retaining rings
MD-MINI-LID	MD-MINI lid, (WxLxH) 83x58.5x31.5mm
MD-MINI-CAR-ADAPTER	Car adapter for MD-MINI and MC-0203, 1.5M

\* For a complete list of accessories, please refer to [Page 71-74](#)



MD-MINI-LID



MD-MINI-CAR-ADAPTER



\* All images are for reference only, actual products might differ from the pictures above.  
\* Technical specifications subject to change without notice.



# Genius Dry Bath Incubator

## MD series

The Genius Dry Bath Incubators come in either single or dual block models, along with a complete set of interchangeable blocks. It is designed for a variety of applications, including restriction digest, denaturing DNA melting agar, coagulation studies, hybridization and hot start thermo-cycled reaction. The microprocessor controller offers highly accurate temperature control, rapid heating and excellent stability. The temperature can be set in increments of 0.1°C from 5°C above ambient to 150°C. An optional temperature probe is available to place directly in samples. A timer can be set from 1- 999mins. The MD series can be used as a mini water bath or bead bath. Optional function control software allows the dry bath incubator to perform real-time data recording through a PC.

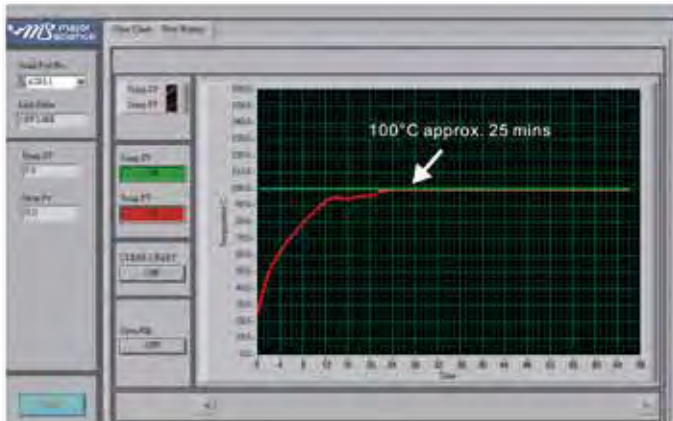


MD-01N



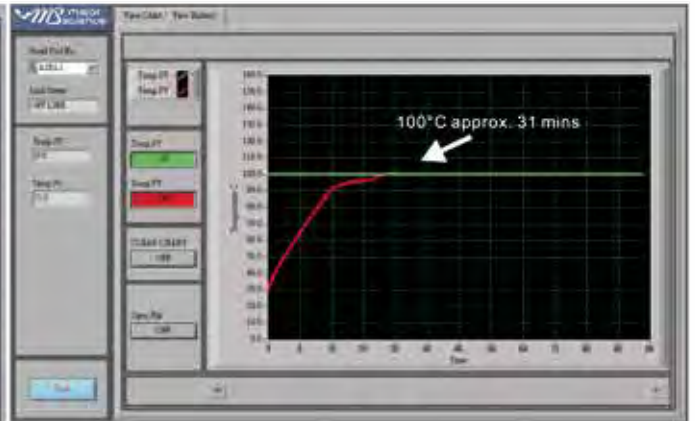
MD-02N

### MD-01N



- Temp. set value:100°C
- Initial temp. value:25°C
- Block model: MD-B1.5
- Process time: Approx. 25mins

### MD-02N



- Temp. set value:100°C
- Initial temp. value:30°C
- Block model: MD-B1.5
- Process time: Approx. 31mins

### Features

- Digital microprocessor offers precise performance control
- Highly accurate temperature control and broad control range
- Rapid heating rate
- Digital LED display & timer
- User temperature calibration
- Molded aluminum alloy chamber
- Function control software available



Can be used as a water bath

## Specification



with beads



with water



with block

Cat. No.	MD-01N (Single Block)	MD-02N (Dual Block)
Display	LED	
Power	125W	200W
Dimension (WxLxH)	Approx. 7.9"x11.7"x3.2" (200x298x80mm)	
Controller	Digital microprocess controller	
Heating Chamber	Molded Waterproof aluminum alloy coated with PTFE	
Temperature Control Range	5°C above ambient to 150°C**	
Temperature Increment	0.1°C	
Temperature Uniformity	±0.2°C at 37°C	
Temperature Accuracy	±0.2°C at 37°C	
Temperature Calibration	Yes	
Timer	999 (min) / Continuous	
Safety	Leak proof heating chamber	
	Over temperature protection	
	SSR failure detection	
Operating Temperature	Ambient to 40°C	
Special Feature	Can be used as water bath or bead bath incubator	
Block Material	Aluminum alloy	
Block Type	Standard and customized types are available	
PC Connection	RS232	
Rated Voltage	110V / 220V~	
Weight	Approx. 4.6lb (2.1kg)	Approx. 6.2lb (2.8kg)
<b>Blocks</b>		
Block Material	Aluminum alloy	
Dimension (WxLxH)	Approx. 3.1"x4.1"x2" (79x104x50mm) for standard type	
Block Lifter Well	Yes	
Thermometer Well	Yes (except microplate blocks)	

## Ordering Information

Cat. No.	Product Description
MD-01N-110/220	Genius Dry Bath Incubator (One block unit); without block
MD-02N-110/220	Genius Dry Bath Incubator (Dual block unit); without block

## Accessories

Cat. No.	Product Description
MD-RS232	RS 232 cable
MD-PCSW	Data record and function control software package
MD-PCSW-R	Data record and function control software package, including a RS232 cable
MD-MP01-S	For microplate; titerplate (Plain Block for Single Block unit only)
MD-MP01-D	For microplate; titerplate (Dual Block unit only)
MD-MP02-S	For 96 wells deep microplate or PCR plate ( for Single Block unit only)
MD-MP02-D	For 96 wells deep microplate or PCR plate ( for Dual Block unit only)
MD-B0.2	For 0.2ml tube, 64 wells (or 0.2ml PCR strip tube for 8 wells x 8)
MD-B0.5	For 0.5ml tube, 20 wells
MD-B1.5	For 1.5ml tube, 20 wells
MD-B0.5+1.5	Combination: for 0.5ml tube, 12 wells; and for 1.5ml tube, 12 wells (on the same side)
MD-B0.5/1.5	One side for 1.5 or 2.0ml tube, 20 wells and another side for 0.5ml tube, 30 wells (on the opposite side)
MD-B13	Well size 13mm, 20 wells
MD-B17	For 15ml centrifuge tube, 12 wells
MD-B20	Well size 20mm, 12 wells
MD-B25	Well size 25mm, 6 wells
MD-B29	For 50ml centrifuge tube, 4 wells

\* For a complete list of accessories, please refer to Page 71-74

\*\*For prevent temperature difference effect and keep temperature stable, PQ is required in high temperature control mode(>=140 °C) or contact the local dealer before ordering.

\*\*\*For the thermoblock requirement of dual block unit, please discuss with local dealer before order.

# Elite Dry Bath Incubator

## EL series

The Elite Dry Bath Incubator comes in single or dual block modes along with a comprehensive set of interchangeable blocks. It is designed for a variety of applications, including restriction digest, denaturing DNA, BUN, melting agar, coagulation studies, hybridization and hot start thermo-cycled reaction. Elite Dry Bath is recognized as the finest, fastest heating and smallest foot print dry bath incubator. In addition, the aluminum blocks can be removed for the use of a mini water bath or a bead bath. The temperature setpoint can be set in increments of 0.1°C from 5°C above ambient to 150°C. Optional PC control software allows the dry bath incubator to perform real time data recording through a PC.

FCCE

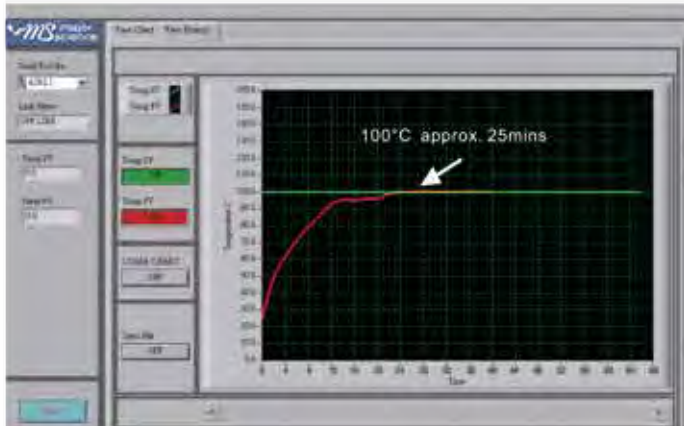


EL-01



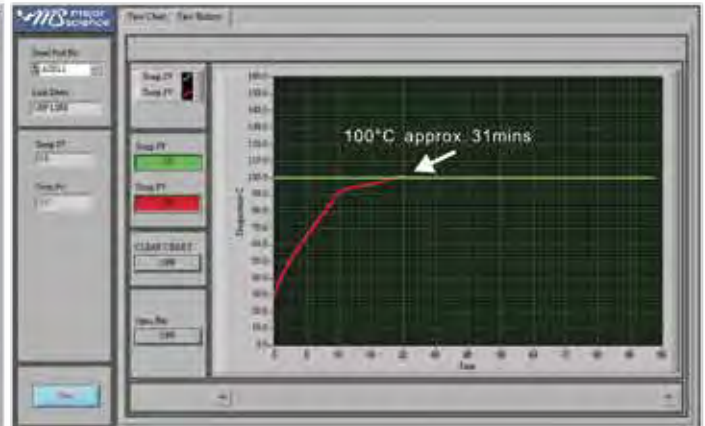
EL-02

### EL-01



- Temp. set value: 100°C
- Initial temp. value: 25°C
- Block model: MD-B1.5
- Process time: Approx. 25mins

### EL-02



- Temp. set value: 100°C
- Initial temp. value: 30°C
- Block model: MD-B1.5
- Process time: Approx. 31mins

### Features

- Digital microprocessor controller confers performance and precise control
- Broad temperature control range & guaranteed uniformity
- Excellent heating rate
- Large LCD screen for instant observation
- User temperature calibration
- Can be used as a water bath or bead bath
- Molded aluminum alloy chamber
- Optional PC control software available



Can be used as a bead bath



## Specification



with beads



with water



with block

Cat. No.	EL-01 (Single Block)	EL-02 (Dual Block)
Display	LCD	
Power	125W	200W
Dimension (WxLxH)	Approx. 6"x5.9"x5.3" (152x150x135mm)	Approx. 6"x9.1"x5.3" (152x230x135mm)
Controller	Digital microprocess controller	
Heating Chamber	Molded Waterproof aluminum alloy coated with PTFE	
Temperature Control Range	5°C above ambient to 150°C**	
Temperature Increment	0.1°C	
Temperature Uniformity	± 0.2°C at 37°C	
Temperature Accuracy	± 0.2°C at 37°C	
Temperature Calibration	Yes	
Timer	99 (hr): 59 (min) / Continuous	
Safety	Leak proof heating chamber	
	Over temperature protection	
	SSR failure detection	
Operating Temperature	Ambient to 40°C	
Special Feature	Used as water bath or bead bath incubator	
Block Material	Aluminum alloy	
Block Type	Standard and customized type are available	
PC Connection	RS232	
Rated Voltage	110V / 220V~	
Weight	Approx. 4.6lb (2.1kg)	Approx. 6.1lb (2.8kg)
<b>Blocks</b>		
Block Material	Aluminum alloy	
Dimension (WxLxH)	Approx. 3.1"x4.1"x2" (79x104x50mm) for standard type	
Block Lifter Well	Yes	
Thermometer Well	Yes (except microplate blocks)	

## Ordering Information

Cat. No.	Product Description
EL-01-110/220	Elite Dry Bath Incubator ( One block unit ); without block
EL-02-110/220	Elite Dry Bath Incubator ( Dual block unit ); without block

## Accessories

Cat. No.	Product Description
MD-RS232	RS 232 cable
MD-PCSW	Function control software package
MD-PCSW-R	Function control software package; including a RS232 cable
MD-MP01-S	For microplate; titerplate (Plain Block for Single Block unit only)
MD-MP01-D	For microplate; titerplate (Dual Block unit only)
MD-MP02-S	For 96 wells deep microplate or PCR plate ( for Single Block unit only)
MD-MP02-D	For 96 wells deep microplate or PCR plate ( for Dual Block unit only)
MD-B0.2	For 0.2ml tube, 64 wells (or 0.2ml PCR strip tube for 8 wells x 8)
MD-B0.5	For 0.5ml tube, 20 wells
MD-B1.5	For 1.5ml tube, 20 wells
MD-B0.5+1.5	Combination: for 0.5ml tube, 12 wells; and for 1.5ml tube, 12 wells (on the same side)
MD-B0.5/1.5	One side for 1.5 or 2.0ml tube, 20 wells and another side for 0.5ml tube, 30 wells (on the opposite side)
MD-B13	Well size 13mm, 20 wells
MD-B17	For 15ml centrifuge tube, 12 wells
MD-B20	Well size 20mm, 12 wells
MD-B25	Well size 25mm, 6 wells
MD-B29	For 50ml centrifuge tube, 4 wells

\* For a complete list of accessories, please refer to [Page 71-74](#)

\*\*For prevent temperature difference effect and keep temperature stable, PQ is required in high temperature control mode(>=140 °C ) or contact the local dealer before ordering.

\*\*\*For the thermoblock requirement of dual block unit, please discuss with local dealer before order.

\* All images are for reference only, actual products might differ from the pictures above.  
\* Technical specifications subject to change without notice.



# Ultimate Dry Bath Incubator

MC-01N

Ultimate Dry Bath Incubator is available with different heating and cooling profiles, along with a broad selection of interchangeable blocks. The model is designed for a variety of applications including ligation, restriction digest, denaturing DNA, BUN, melting agar, coagulation studies, hybridization and hot start thermo-cycled reaction. The built-in 2.6" LCD screen permit instant viewing and selection of operation modes: constant, programmable and annealing. The microprocessor controller offers performance, precise control as well as rapid heating and cooling efficiency with excellent stability. The temperature can be set in 0.1°C increments, from -10°C to 100°C. Optional PC control software is available for real time data logging.

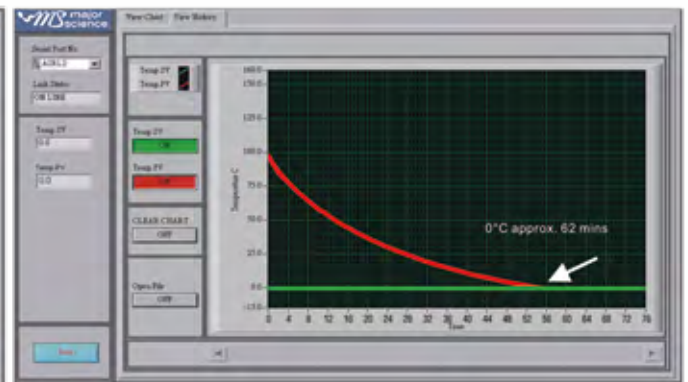


CE

MC-01N



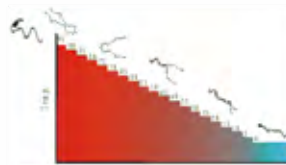
■ Temp. set value: 100°C  
 ■ Initial temp. value: 25°C  
 Block model: MC-B0.2+0.5+1.5  
 Process time: Approx. 17mins



■ Temp. set value: 0°C  
 ■ Initial temp. value: 100°C  
 Block model: MC-B0.2+0.5+1.5  
 Process time: Approx. 62mins

## Features

- Digital microprocessor offers performance and precise control
- Broad temperature control range & guaranteed uniformity
- Highly efficient heating & cooling rates
- Large LCD screen for easy selection of operation modes and setting inputs
- User temperature calibration
- Also a mini water bath and bead bath
- Optional PC recording software available



## Annealing Program

Initial Temp.	95.0
Descending Temp.	5.0
Holding Time.	5
Final Temp.	4.0

## Specification

Cat. No.	MC-01N
Chamber Dimension (WxLxH)	Approx. 5.1"x3.5"x2" (130x90x50mm)
Display	2.6" LCD
Power	400W
Dimension (WxLxH)	Approx. 7.9"x11.6"x5.5" (200x295x140mm)
Controller	Digital microprocess controller
Heating Chamber	Molded Waterproof aluminum alloy coated with PTFE
Temperature Control Range	30°C below ambient temperature ( minimum -10°C ) to 100°C
Temperature Increment	0.1°C
Temperature Uniformity	± 0.2°C at 37°C
Temperature Accuracy	± 0.2°C at 37°C
Temperature Calibration	Yes
Operation Mode	Constant operation: constant temperature ( -10°C to 100°C ); Timer: 9999 (min)
	Program operation: 1-4 steps and up to 9 cycles; timer: 9999 (min)
	Annealing program
Safety Device	Leak proof heating chamber
Operating Temperature	Ambient to 40°C
Special Feature	Can be used as water bath or bead bath incubator
Block Material	Aluminum alloy
Block Type	Standard and customized type are available
PC Connection	RS232
Rated Voltage	110V / 220V-, selectable
Weight	Approx. 17.6lb (8kg)
<b>Blocks</b>	<b>Ultimate MC Block</b>
Dimension (WxLxH)	Approx. 3.5"x5.1"x1.8" (89x129x46mm)
Block Material	Aluminum alloy
Block Lifter Well	Yes
Thermometer Well	Yes ( except microplate blocks )



with water



with beads



with block

## Ordering Information

Cat. No.	Product Description
MC-01	Ultimate Dry Bath Incubator; without block

## Accessories

Cat. No.	Product Description
MC-RS232	RS 232 cable
MC-PCSW	Function control software package
MC-PCSW-R	Function control software package; including a RS232 cable
MC-MP01	For microplate; titerplate ( Plain Block )
MC-MP02	For 96 wells deep microplate or PCR plate
MC-B0.5	For 0.5ml, 30 wells
MC-B1.5	For 1.5 or 2.0ml, 30 wells
MC-B0.5+1.5	Combination: for 1.5ml or 2.0ml tube, 15 wells and 0.5ml tube, 15 wells (on the same side)
MC-B0.2+0.5+1.5	Combination: 0.2ml tube (or strip tube for 8 wells ), 24 wells; 1.5ml or 2.0ml tube, 10 wells and 0.5ml tube, 10 wells (on the same side)
MC-B13	Well size 13mm, 30 wells
MC-B17	For 15ml centrifuge tube, 15 wells
MC-B20	Well size 20mm, 15 wells
MC-B25	Well size 25mm, 6 wells
MC-B29	For 50ml centrifuge tube, 6 wells
MC-B0.2H	(1/2) half block for 0.2ml tube, 40 wells ( or 0.2ml PCR strip tube for 8 wells x 5 ) One Ultimate Dry Bath Incubator can insert 2ea of half block
MC-B0.5H	(1/2) half block for 0.5ml tube, 15 wells One Ultimate Dry Bath Incubator can insert 2ea of half block
MC-B1.5H	(1/2) half block for 1.5 or 2ml tube, 15 wells One Ultimate Dry Bath Incubator can insert 2ea of half block

\* For a complete list of accessories, please refer to [Page 71-74](#)



# Thermostirrer

## TS-8W

Major Science Thermostirrers feature leading-edge speed performance and the broadest temperature control range to cover a variety of chemical and biological applications including synthesis of organic compounds, derivatization, drug solubility, protein crystallization and process optimization. Mixing efficiency is maintained uniformly across the sample wells due to independent magnets under each well and thus ensures consistency of experimental results. Furthermore, Major Science designed a remote thermostirrer module for studies that require a thermostatic mixer to function as a part of an automated process such as a polymer viscometers.

### Features:

- Microprocessor control with digital performance
- Brushless motor for individual well agitation
- Outstanding temp. control performance up to 200°C
- User temperature calibration
- Customization available
- Well-insulation around casework
- Over temperature protection
- LCD screen & timer (standalone model only)
- Highest stirring speed, 3500rpm in the market



User temperature calibration



TS-8W



Cooling System Connection Port

### Specifications

Cat. No.	TS-8W-110	TS-8W-220
Controller	Digital microprocessor controller	
Display	2.6" LCD monochrome display	
Motor	Brushless motor	
Number Of Position	8 wells (2x4) with individual magnetic stirrer or customized	
Well Diameter	Ø29.5mm, 62mm depth or customized	
Stirring Speed	500 - 3500rpm	
Temperature Control Range	5°C above ambient to 200°C	
Temperature Increment	± 0.1°C	
Temperature Uniformity	± 0.7°C @ 150°C	
Temperature Accuracy	± 0.2°C @ 150°C	
Temperature Calibration	Yes	
Operating Temperature	Ambient to 40°C	
Timer	99 (hr): 59 (min) / Continuous	
Block Material	PTFE coating with individual magnetic	
Data Logging	RS 232 (Max. 2.5 meter long)	
Safety	Well-insulation around casework	
	Leakage proof for heating chamber	
	Over temperature protection	
Rated Voltage	110V~; 50/60Hz, 6.3A	220V~; 50/60Hz, 3.15A
Dimension (WxLxH)	Approx. 9.1"x11.8"x6.3" (230x300x160mm)	
Weight	Approx. 18.7lb (8.5kg)	
Power	600W	
Vessel Diameter	Max. 28.5mm or customized	
Communication Port	RS-232	

\* Temperature uniformity would be dependent on the integration to your automation system.

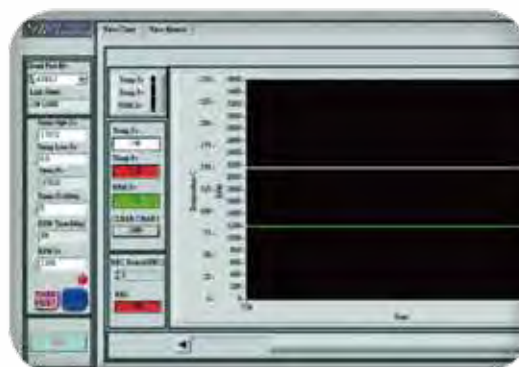
\*\*\* Cooling below ambient temperature is feasible to connect with an external chiller.

### Ordering Information

Cat. No.	Product Description
TS-8W-110	Thermostirrer 8 wells, 110V~
TS-8W-220	Thermostirrer 8 wells, 220V~

### Accessories

Cat. No.	Product Description
TS-8W-SW	Functional control and data logging software for Thermostirrer series. Including software CD and cable.



Functional control software package available

# Dry Bath Block & Beads

Metallic Thermal Beads  
Mini Dry Bath Blocks  
Dry Bath Blocks  
Ultimate Dry Bath Blocks

### For Beads

Major Science offers you the Metallic Thermal Beads as an alternative to the dry bath aluminum blocks. The beads are dry metallic thermal alloy designed to replace water in a water bath and ice in an ice bucket. Compared to a water bath, using the metallic thermal beads could reduce the risk of contamination and allow you to get rid of antibiotics usage. In addition, the beads are also recyclable and energy efficient. The metallic thermal beads also help to reduce maintenance works such as emptying, cleaning, monitoring, and refilling the water bath to give you a more hassle-free environment in the lab. We specifically supply the beads in a standard pack for you.

### For Blocks

The Dry Bath Blocks are designed for the MS Thermoblock Dry Bath Incubator. The precisely machined aluminum alloy blocks deliver efficient heat transfer and are suitable for microplate and various sizes of test tubes and centrifuge tubes ranging from 0.2ml to 50ml. In addition to the standard blocks, customized blocks are also available according to user's requirements.



beads

### Thermal Beads Specifications

Cat. No.	Beads
Properties	Metal composition
	Moisture and gas impermeable
	High thermal conductivity
	Smooth, rounded surface
Working Temperature Range	-80°C to 180°C
Size	Diameter 5-8mm, Height 1-2mm
Weight	3.6lbs per liter
Environment	Recyclable
	Non-toxic, non-vaporizing material
	No daily requirement for biocide use – no gray water
	Improves energy efficiency of standard water baths by over 50%



Product may be used up to 300°C without loss in thermal performance, but product fluidity may be reduced.

### Features (for beads)

- Fully compatible with MS Dry Bath Incubators
- Keeps your equipment dry and protected from water-borne microbial contaminants
- 50% more energy efficient than water bath
- High efficiency to warm, thaw, incubate and chill samples at constant temperatures
- Eliminates the hassle of emptying, cleaning and refilling water baths or changing blocks
- Support all shapes of labwares
- Stays clean easily

### Features (for blocks)

- Precisely CNC machined aluminum alloy blocks
- R -curve edged block design
- Through Sand Blast Anodizing Surface treatment, it ensure a nice & smooth surface block with a longer durability
- Laser marked on the selected blocks



### Ordering Information

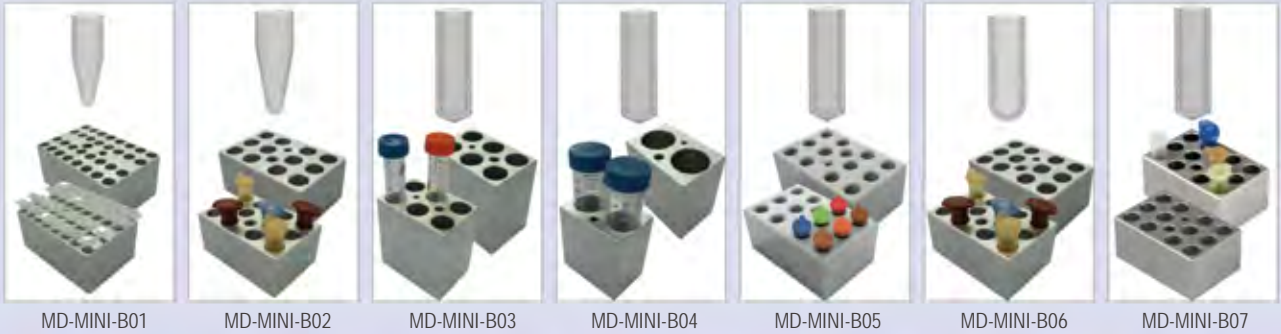
Cat. No.	Product Description
MD-MINI-BD00	Metallic thermal beads for Mini dry bath incubator, for MD-MINI & MC-0203, 170g (Beads only)
MD-BD00	Metallic thermal beads for Genius and Elite dry bath incubator, for MD-01N and EL-01, 700g (Beads only)
MC-BD00	Metallic thermal beads for Ultimate dry bath incubator, for MC-01N, 900g (Beads only)

\* All images are for reference only, actual products might differ from the pictures above.  
\* Technical specifications subject to change without notice.

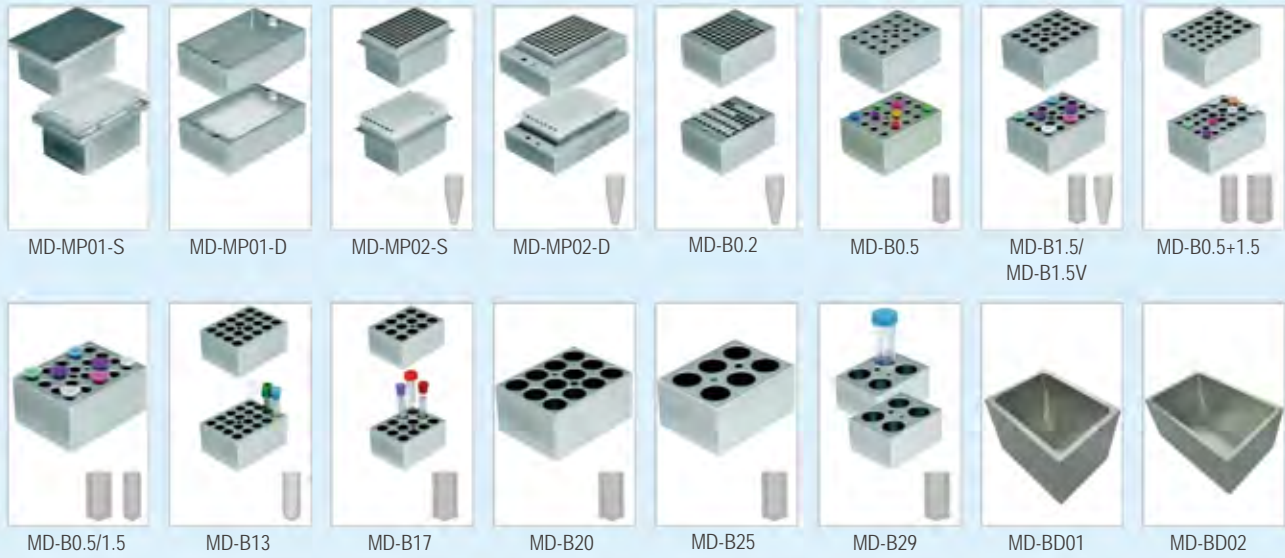


MS Thermoblock Dry Bath Incubator

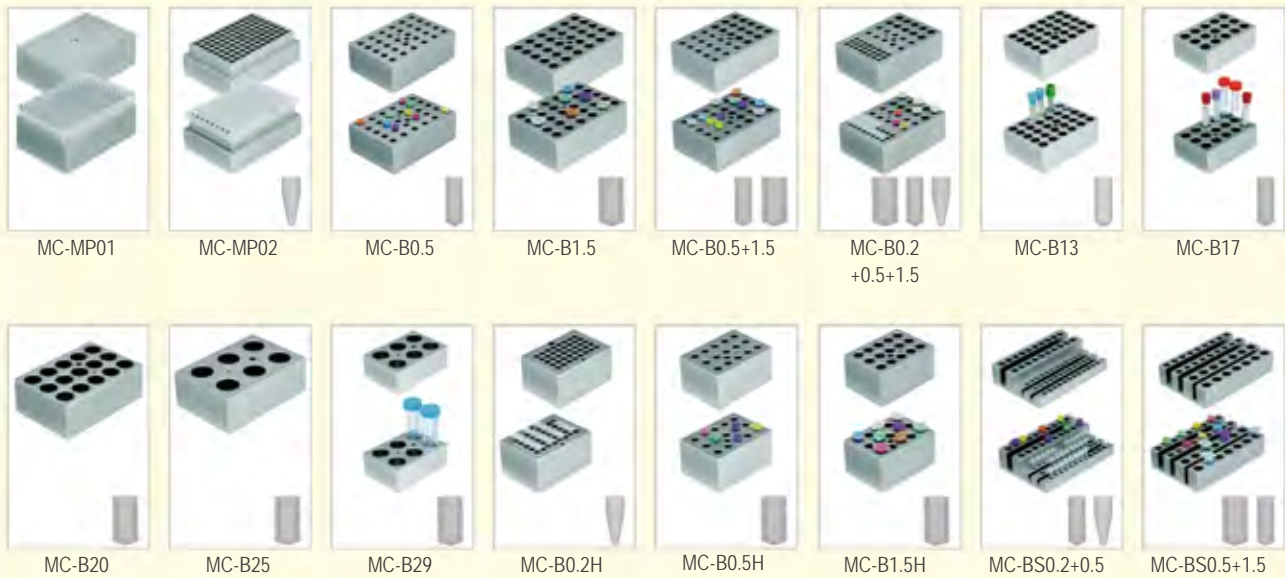
Mini Dry Bath Blocks



Dry Bath Blocks



Ultimate Dry Bath Blocks



## Ordering Information\*\*




Cat. No.		Product Description
Mini Dry Bath Blocks	MD-MINI-B01	For 0.2ml tube (PCR strip tube), 32 wells, Ø6.35mm, depth 17mm, (WxLxH) 47x71x32mm
	MD-MINI-B02	For 1.5ml tube, 12 wells, Ø10.88mm, depth 30mm, (WxLxH) 47x71x32mm
	MD-MINI-B03	For 15ml tube, 6 wells, Ø17.3mm, depth 70mm, (WxLxH) 47x71x75mm
	MD-MINI-B04	For 50ml tube, 2 wells, Ø29.0mm, depth 70mm, (WxLxH) 47x71x75mm
	MD-MINI-B05	For 0.5ml tube, 12 wells, Ø7.9mm, depth 25mm,(WxLxH) 47x71x32mm
	MD-MINI-B06	For 2.0ml or 1.5ml tube, 12 wells, Ø11.0mm, depth 30mm, (WxLxH) 47x71x32mm
	MD-MINI-B07	For 2.0ml or 1.5ml tube, 12 wells, Ø11.0mm, depth 30mm, (WxLxH) 47x71x32mm
	MS-BL95-E	Block Lifter, 95mm length with E-type retaining rings
Dry Bath Blocks	MD-MP01-S	For microplate; titerplate (Plain Block for Single Block unit only)
	MD-MP01-D	For microplate; titerplate (Dual Block unit only)
	MD-MP02-S	For 96 wells deep microplate or PCR plate ( for Single Block unit only)
	MD-MP02-D	For 96 wells deep microplate or PCR plate ( for Dual Block unit only)
	MD-B0.2	For 0.2ml tube, 64 wells (or 0.2ml PCR strip tube for 8 wells x 8)
	MD-B0.5	For 0.5ml tube, 20 wells
	MD-B1.5	For 1.5ml or 2.0ml tube, 20 wells
	MD-B1.5V	For 1.5ml or 2.0ml V-shaped tube, 20 wells
	MD-B0.5+1.5	Combination: for 0.5ml tube, 12 wells; and for 1.5ml tube, 12 wells (on the same side)
	MD-B0.5/1.5	One side for 1.5 or 2.0ml tube, 20 wells and another side for 0.5ml tube, 30 wells (on the opposite side)
	MD-B13	Well size 13mm, 20 wells
	MD-B17	For 15ml centrifuge tube, 12 wells
	MD-B20	Well size 20mm, 12 wells
	MD-B25	Well size 25mm, 6 wells
	MD-B29	For 50ml centrifuge tube, 4 wells
	MD-BD01	Single bead MD dry bath block, (WxLxH) 79x104x76mm
	MD-BD02	Dual bead MD dry bath block, (WxLxH) 104x158x76mm
MS-BL95-E	Block Lifter, 95mm length with E-type retaining rings	
Ultimate Dry Bath Blocks	MC-MP01	For Microplate; titerplate (Plain Block)
	MC-MP02	For 96 wells deep microplate or PCR plate
	MC-B0.5	For 0.5ml, 30 wells
	MC-B1.5	For 1.5 or 2.0ml, 30 wells
	MC-B0.5+1.5	Combination: for 1.5ml or 2.0ml tube, 15 wells and 0.5ml tube, 15 wells (on the same side)
	MC-B0.2+0.5+1.5	Combination: 0.2ml tube (or strip tube for 8 wells ), 24 wells; 1.5ml or 2.0ml tube, 10 wells and 0.5ml tube, 10 wells (on the same side)
	MC-B13	Well size 13mm, 30 wells
	MC-B17	For 15ml centrifuge tube, 15 wells
	MC-B20	Well size 20mm, 15 wells
	MC-B25	Well size 25mm, 6 wells
	MC-B29	For 50ml centrifuge tube, 6 wells
	MC-B0.2H	(1/2) half block for 0.2ml tube, 40 wells ( or 0.2ml PCR strip tube for 8 wells x 5) One Ultimate Dry Bath Incubator can insert 2ea of half block
	MC-B0.5H	(1/2) half block for 0.5ml tube, 15 wells One Ultimate Dry Bath Incubator can insert 2ea of half block
	MC-B1.5H	(1/2) half block for 1.5 or 2ml tube, 15 wells One Ultimate Dry Bath Incubator can insert 2ea of half block
	MC-BS0.2+0.5	Combination: 0.2ml tube, 36 wells; 0.5ml, 20 wells
	MC-BS0.5+1.5	Combination: 0.5ml tube, 18 wells; 1.5ml, 14 wells
	MC-BD	Ultimate bead bath block, (WxLxH) 90x127x76mm
	MS-BL95-E	Block Lifter, 95mm length with E-type retaining rings

\* For the tube bottom type (round, conical or flat), please refer to the pictures on page 72.

\*\*Customized block is available and contact the local dealer before order.



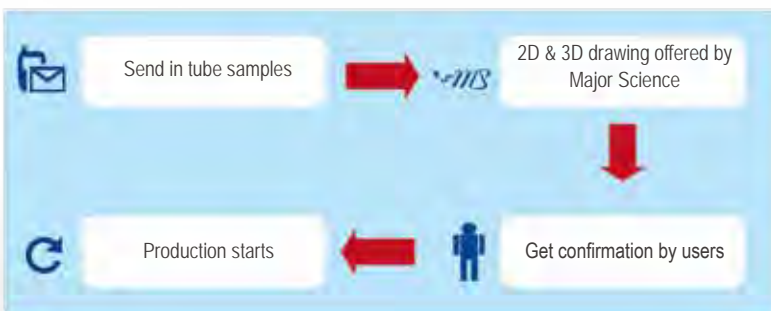
## Aluminum alloy blocks Specifications

Cat. No.	Mini Dry Bath Blocks	Dry Bath Blocks	Ultimate Dry Bath Blocks
Photo			
Used For	MD Mini <a href="#">Page 61</a> , MC-0203 <a href="#">Page 62</a>	EL series <a href="#">Page 66</a> , MD series <a href="#">Page 64</a>	MC-01 series <a href="#">Page 68</a>
Block Lifter	included		
Product Description	The Mini Dry Bath Blocks are designed for both mini heating or cooling dry bath incubators. The precisely machined aluminum alloy blocks deliver efficient heat transfer and are suitable for PCR tubes in strip and various size of test tubes and centrifuge tubes ranging from 0.2ml to 50ml.	The Dry Bath Blocks are designed for the Elite Dry Bath Incubator and the Genius Dry Bath Incubator. The precisely machined aluminum alloy blocks deliver efficient heat transfer and are suitable for microplate and various size of test tubes and centrifuge tubes ranging from 0.2ml to 50ml.	The Ultimate Dry Bath Blocks are designed for the Ultimate Dry Bath Incubators. The precisely-machined aluminum alloy blocks, which are suitable for microplate and different sizes of test tubes and centrifuge tubes ranging from 0.2ml to 50ml, deliver efficient heating and cooling performance. In addition to the standard blocks, customized blocks are also available requirements. MC Blocks are designed for Ultimate plus Dry Bath Incubator to provide more efficient heating and cooling speed. Two standard block modes and customized blocks are available.
Block Material	Aluminum alloy		
Dimension (WxLxH)	Approx. 1.9"x2.8"x1.3" (47x71x32mm) for MD-MINI-B01/02/05/06/07  Approx. 1.9"x2.8"x3" (47x71x75mm) for MD-MINI-B03/04	Approx. 3.4"x5"x2.5" (87x128x62.3mm) for MD-MP01-S  Approx. 4.1"x6.2"x2" (104x158x50mm) for MD-MP01-D/ MD-MP02-D  Approx. 3.4"x5"x2.7" (87x128x69.5mm) for MD-MP02-S  Approx. 3.1"x4.1"x2" (79x104x50mm) for standard blocks	Approx. 3.5"x5.1"x1.8" (89x129x46mm) for standard blocks  Approx. 2.5"x3.5"x1.8" (64.5x89x46mm) for MC-B0.2H/0.5H/1.5H  Approx. 3.5"x5.1"x1.2" (89x129x30mm) for MC-BS0.2+0.5/0.5+1.5
Weight	Approx. 0.5lb (0.24kg) for MD-MINI-B01/02/05/06/07  Approx. 1.0lb (0.46kg) for MD-MINI-B03/04	N/A	
Block Lifter Well	Yes		
Thermometer Well	Yes	Yes (except microplate blocks)	

\*Customized blocks available.

### Laser marked on the selected blocks

#### Flow chart for customization process:





#### Taiwan Headquarters

##### Headquarters:

No. 156, Sec. 1, Guoji Rd., Taoyuan Dist.,  
Taoyuan City 33061, Taiwan  
T/+886-3-3762878  
F/+886-3-3761310

##### Factory:

No.19, Ln. 207, Huakang St. Bade Dist.,  
Taoyuan City 33464 Taiwan  
T/ +886-3-3623319  
F/ +886-3-3623133  
Email : info@majorsci.com

#### Shanghai Office

Room 612, International business exhibition center,  
9300 Hunan Road, Pudong, Shanghai, China  
National toll-free No.:400-823-9177  
T/ +86-21-50795277  
F/ +86-21-50795277

#### US Office

19959 Sea Gull Way  
Saratoga, CA 95070  
U.S.A.  
T/ +1-408-366-9866  
F/ +1-408-446-1107

#### India Office

D. No. 12-13-99, Satguru Apts. Extn.  
Street. No. 3, Lane No.1, Tamaka  
Secunderabad – 500 017. India  
T/ +91-40-27001515  
T/ +91-40-27001586



[www.majorsci.com](http://www.majorsci.com)

[info@majorsci.com](mailto:info@majorsci.com)

